



# CHEF RUBBER

*inspiring the senses*

## RubbAire 1/6<sub>HP</sub> COMPRESSOR

### Instructions & Maintenance



#### Operating Instructions

Connect the equipment for your application to the outgoing 1/4" male fitting at the front of the cylinder head.

To keep the connecting fitting from leaking air you should always apply teflon tape to the thread of the fitting.

Connect the compressor to a protected power supply line with the same voltage as specified on the product label.

Adjust the outlet air pressure on the Filter/Regulator (see fig).

Compressor running is controlled automatically by a pressure switch, referring to the pressure in the outlet.

Do not use the compressor continuously for longer than 10 minutes.

Allow the compressor to cool down for 15 minutes after every 10 minutes working cycle.

Motor is equipped with a thermal protector with automatic reset.

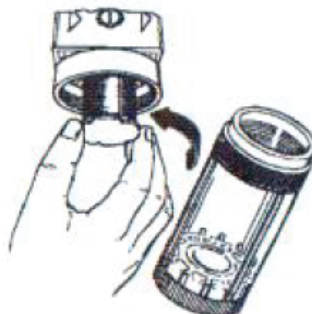


#### Compressor Maintenance

Clean the compressor after every use.

After every use, drain the water collected in the Filter/Regulator bowl, pressing upwards the valve placed on the bottom side of the cup (outlet must be pressurized).

Once every three months, clean the filter of the Filter/Regulator by blowing with compressed air (see fig).



## Installation

1. After taking the compressor out of its packaging, please check it carefully for any damages due to shipping.
2. Install the compressor on a flat surface in a suitable sized, dry room with good ventilation, where the temperature is not likely to rise above 94 degrees Fahrenheit (35 degrees Centigrade).
3. Be sure the electrical line rating is proper to the appliance (refer to the data label), and that the electrical line is protected and equipped of the ground line.
4. Dispose of the packing material in compliance with the regulations in the country or state where the compressor is installed.

## Safety

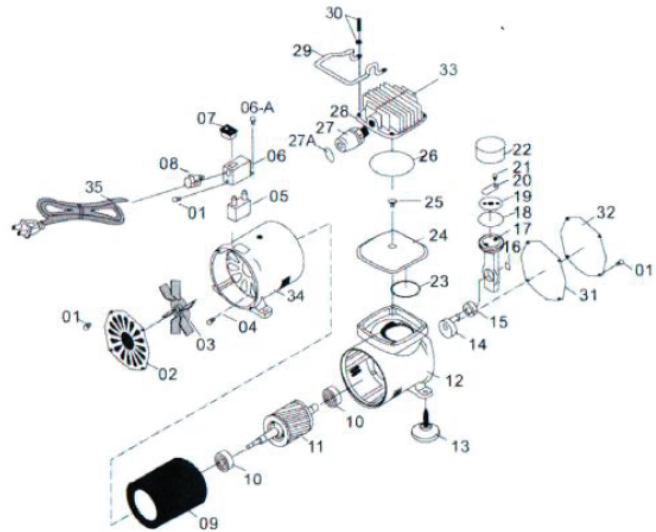
1. Do not use the compressor for any other purpose than the one it has been designed for.
2. Do not process other fluid than air.
3. Do not operate the compressor in explosive atmospheres, such as in the presence of flammable liquids, gases or dust.
4. Always make sure the unit is unplugged from the electrical line before performing any service, maintenance or cleaning.
5. Do not expose this unit to rain or moisture.
6. Do not allow children and other untrained people to use or play with the compressor.
7. To avoid the risk of burning, be aware that after extensive use of the compressor, some parts can become very hot. Allow the compressor to cool down before touching it.
8. Do not leave the compressor unattended while running.



## SPARE PARTS LIST

Part No.	Description	Qty.
01	Screw	9
02	Rear Cover	1
03	Fan	1
04	Screw	4
05	Condenser	1
06	Metal Shield	1
06-A	Screw	2
07	Power Switch	1
08	Wire Cover	1
09	Stationary Motor	1
10	Bearing	2
11	Rotary Motor	1
12	Front Body	1
13	Rubber Pad	4
14	Counterweight	1
15	Bearing	1
16	Retainer Ring	1
17	Link	1
18	Compression Ring	1

Part No.	Description	Qty.
19	Block	1
20	Valve Plate	1
21	Screw	1
22	Cylinder	1
23	O-Ring	1
24	Cylinder Block	1
25	Valve	1
26	O-Ring	1
27	Pressure Switch	1
27-A	O-Ring	1
28	Cylinder Head	1
29	Handle	1
30	Cap Screw	4
31	Front Gasket	1
32	Front Cover	1
33	Air Outlet	1
34	Rear Body	1
35	Wire Plug	1



## Limited Warranty

The warranty is for the original purchaser. We will repair or replace, without charge, any part or compressor we find to be defective in factory material or workmanship within one year of purchase. Proof of Purchase is required. Warranty services are provided at our service facility located in Houston at the address shown below. You must pay all shipping and handling charges for your compressor. Any material that is shipped to SilentAire Technology without prior approval will not be accepted.

This warranty does not cover your compressor if the Serial Number or Model Number is removed or illegible. Or, if your compressor is (a) damaged in transport, by fire, corrosion, moisture or any occurrences beyond our control, (b) subjected to negligence or misuse, or (c) operated or maintained contrary to our instructions. We will not be liable for damage to persons or property, commercial loss or incidental or consequential damage due to a defective compressor.

All implied warranties, including warranty of merchantability or fitness, are limited to the duration of this written warranty. However, some states do not allow the exclusion or limitation of incidental or consequential damages. Therefore the above limitation may not apply to you.

If you wish to obtain warranty service or further information concerning this warranty, contact Chef Rubber at (830) 685-3156.

## Related Chef Rubber Products:



**Airbrush Color Kit**  
Primary Colors  
Item#: 301100



**Color Jar 6 Pack**  
In Case  
GreX  
Item#: 801211



**Tritium TS5 Dbl Act .5m**  
Pistol Trigger Side Feed  
Item#: 801124



**Airbrush Grip Set**  
For Tritium Airbrushes  
Item#: 801219



**LVLP Top Gravity Fed Gun**  
1.4mm Nozzle 600mL Plastic Cup  
Item#: 801703



**LVLP Cups**  
Metal or Plastic  
For LVLP Top Gravity Fed Gun  
Item#: LVLP-CUPS



**10' Braided Nylon**  
Air Hose  
1/8" Female Connectors  
Item#: 801428



**Airbrush Holder**  
Holds up to 4 airbrushes  
Item#: 801225



**Compressor 3 Line**  
Manifold  
Quick Disconnect Ports  
Item#: 801452



**Compressor 3 Line**  
Manifold  
w/ shut off valves  
Item#: 801450



**GreX MAC Valve w/**  
Quick Connect Coupler  
For GreX Airbrush and Hose  
Item#: 801424



**GreX Adapter Side Feed**  
Fast Blast Cap  
Item#: 801416